

GET THE MOST OUT OF YOUR COMPACT TRACTOR

Attachments for Compact Utility Tractors



Add more  Do More

with John Deere attachments

GIVE YOUR COMPACT TRACTOR A BOOST



Your tractor can do more for you. Adding genuine John Deere attachments transforms your tractor into a highly versatile workhorse fit for a broad range of jobs. You'll accomplish more, in less time, while working safely and comfortably.

THIS PUBLICATION COVERS INFORMATION FOR THE FOLLOWING TRACTOR MODELS:

1026R, 2025R, 2027R, 2032R, 3036E, 3033R, 3038R, 3045R, 4049M, 4066M, 4049R, 4066R and prior models.



PROTECTING YOUR INVESTMENT



PERFORMANCE ENHANCEMENT



HYDRAULICS



HITCH SOLUTIONS



PROTECTING YOUR INVESTMENT



It can get rough out there. Keeping your tractor in good condition and repair costs low is important. These attachments will help protect your tractor against accidental damage, theft or vandalism.

Hood Guards

Protect your grille from brush, debris and those unexpected “bumps” that happen if you get too close when using a front loader.



Part number	Model
BW15217	2320, 2025R, H130
BW15634	2520, 2720, 2027R, 2032R, H130
BW15219	3320, 3520, 3720, 3033R, 3038R, 3045R, H165, 300 CX
BW15221	4320, 4520, 4720, 4044M/R, 4052M/R, 4066M/R, H180, 400 CX
BW15634	2520, 2720, 2027R, 2032R, H130
BW16617	3033R, 3038R, 3045R, H165
BW16335	4049R, 4066R, H180

Deluxe Hood Guards*

Enjoy increased protection to the front and side of your grille. The hood guard’s wrap-around design combined with mesh front provides superior protection from debris and brush.



Part number	Model	Description
BW15901	1026R, H120	Open Units
BW16585	3033R, 3038R, 3045R, H165	Open and Cab Units
BW16155	4049M/R, 4066M/R, H180	Open and Cab Units

* Not road legal

Rear Fender Extension

Keep it clean by protecting the operator and tractor from debris flying off the rear tyres.

Part number	Model	Description
LVB25652	2320, 2520, 2720	Open station
LVB25684	3320, 3520, 3720, 3033R, 3038R, 3045R	Open station
LVB25683	4320, 4520, 4720, 4049M/R, 4066M/R	Open station
LVB24860	3320, 3520, 3720, 4320, 4520, 4720, 3033R, 3038R, 3045R, 4049M/R, 4066M/R	Cab



Front Fenders

Avoid spray and mud from the front wheels being thrown onto the cab or the operator.

Part number	Model	Description
LVB25686	3320, 3520, 3720	Open and Cab Units
LVB25685	4320, 4520, 4720	Open and Cab Units



Back-up Alarm Kit*

Alert bystanders when you are reversing with this audible alarm that sounds when the tractor is in reverse.

BLV10648
3320, 3520, 3720, 3033R, 3038R, 3045R, 4320, 4520, 4720

BLV10358
4049M/R, 4066M/R



Locking Fuel Cap

A sure way to guard against theft or vandalism.

AL113087
3320, 3520, 3720, 4320, 4520, 4720

AL213202
3033R, 3038R, 3045R, 4049M/R, 4066M/R

LVA19485
4049M/R, 4066M/R



Door Lock Kit

The door-lock kit features a new handle and high security dedicated cab door key that is different from the standard ignition key.

AL71345
3320, 3520, 3720, 4320, 4520, 4720, 3033R, 3038R, 3045R, 4049R, 4066R

* Not for Power Reverser Transmission





LIFTS YOU UP TO
NEW HEIGHTS

Loaders

Meet your match. We've paired up the John Deere Quik-Park loader storage stands and parkable loader's fast cycle times to impressive lift capacities for total, superior loading performance and unparalleled efficiency. Not only will you save time loading but you'll save time putting them on and taking them off – a mere three minutes, or less.

		1R Series	2R Series	3E Series	3R Series	4M Series	4R Series, 4M Series
		H120	H130	D160	H165	D170	H180
Lift Capacity: The lift capacity at pivot pin is a gross measure of loader lifting ability.	Lift capacity at pivot pin (max. height), kg (lb)	380 (838)	410 (902)	531 (1171)	678 (1492)	1087 (2391)	1006 (2213)
Lift and Reach: Consider how high and far you need a loader to reach. Do you need to load a truck, for instance?	Maximum lift height at pivot pin, mm (in) Reach at max. height, mm (in)	1809 (71.2) 571 (22.5)	1993 (78.5) 750 (29.5)	2162 (85.1) 627 (24.7)	2571 (101.2) 533 (20.1)	2850 (112.1)	2796 (110)
Breakout Force: The higher the breakout force, the easier it is to fill the bucket.	Breakout force at pivot pin, kg (lb)	825 (1819)	1016 (2239)	811 (1788)	1470 (3242)	1743 (3835)	1743 (3835)
Fast Cycle Times: Loaders perform repetitive tasks, which means that fast cycle times improve productivity.							
Dump Angle, degrees		40	38	45	45	42	46.6
Rollback Angle, degrees		31.2	25	30	31	28.6	38.4
Loader Raising Time, sec.		4.0	3.19	2.78	3.57	4.26	2.41
Loader Lowering Time, sec.		2.5	1.95	2.5	2.1	3.13	1.62
Bucket Dump Time, sec.		5.7 (2.2)	3.19 (1.25)	1.5	3.04 (1.24)	3.14	2.46
Bucket Rollback Time, sec.		3.5	1.95	1.55	1.79	2.42	1.65

Loader Attachments

Haul all things heavy or bulky with ease or even loosen up hard packed material – there is a lot you can accomplish with these attachments. They are all specifically designed to fit your John Deere front loader and make it even more versatile.

Materials Buckets

Load dirt, gravel and feed. Round-back bucket design provides superior material filling and emptying.

Part number	Fits loader model	Description
BW14144	H120, H130, 200CX	1250 mm (49 in)
BW14145	H120, H130, H165, D160, 200CX, 300CX	1350 mm (53 in)
BW14146	H120, H130, H165, D160, D170, H180, 305, 200CX, 300CX, 400CX	1550 mm (61 in)
BW14147	H165, D160, H180, 300CX, 400CX	1850 mm (73 in)
BW15863	D160	1550 mm (61 in)



Heavy Duty Buckets

Designed for heavier applications, this bucket features additional wear bars, bucket end plate supports and pre-drilled holes for replacing the cutting edges. (Bucket loop option on 1850 mm heavy duty bucket)

Part number	Fits loader model	Description
BW14764	H165, D160, D170, H180, 300CX, 400CX	1550 mm (61 in)
BW14765	D170, H165, H180, 300CX, 400CX	1850 mm (73 in)

High Volume Buckets

The perfect match for moving a large capacity of light material such as snow, sawdust, mulch and feed.

Part number	Fits loader model	Description
BW14658	D170, H165, H180, 300CX, 400CX	1850 mm (73 in)
BW15273	300CX, 400CX, H180, D170	2150 mm (85 in)

Tooth Bars

Easily penetrate hard-packed material. Slide tooth bar over cutting edge to attach.

Part number	Use for	Description
BW15227	Heavy Duty Bucket	1550 mm (61 in)
BW15228	Heavy Duty Bucket	1850 mm (73 in)



Replaceable Cutting Edges

Recommended for "heavier use" applications, such as commercial operations and rental customers. Additional strength is added to the cutting edge and the replaceable cutting edge is reversible for longer wear life. Not compatible with tooth bars.

Part number	Use for	Description
BW14762	Heavy Duty Bucket	1550 mm (61 in)
BW14763	Heavy Duty Bucket	1850 mm (73 in)



PROPERLY BALLAST YOUR TRACTOR



Correct ballasting delivers maximum tractor performance as it helps to put more power to the ground, improving fuel consumption, traction and ride comfort. How much ballast you should use depends on the tractor's horsepower, the speed it needs to move at and the type of implement being used.

Front Quik-Tatch Weight Brackets

Properly ballast your tractor to get the most efficiency out of your implements. Attach this pin and rod to hold weights.



Part number	Model	Description	
LVU28835	1026R, 2320, 2520, 2720	Open station	Holds 5 Quik-Tatch Weights
A15147	1026R, 2320, 2520, 2720	Open station	Holds 5 Quik-Tatch Weights
M134253	3036E, 3033R, 3038R, 3045R, 4049M/R, 4066M/R	Open station and Cab	Holds 6 Quik-Tatch Weights
LVB25705	3033R, 3038R, 3045R, 4320, 4520, 4720, 4066M/R, 4049M/R	Open station and Cab	Holds 6 Quik-Tatch Weights

Front Weight Bracket Extensions

Hold even more weights than your standard Quik-Tatch kit with this extension.

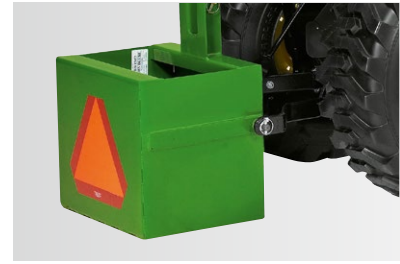


Part number	Model	Description	
BLV10623	1026R, 2320, 2520, 2720, 2025R, 2027R, 2032R	Open station	Holds 7 Quik-Tatch Weights
BLV10442	3320, 3520, 3720, 3033R, 3038R, 3045R, 4066M/R, 4049M/R	Open station and Cab	Holds 12 Quik-Tatch Weights
BLV10441	3033R, 3038R, 3045R, 4120, 4320, 4520, 4720, 4066M/R, 4049M/R	Open station and Cab	Holds 12 Quik-Tatch Weights

Ballast Boxes

Enhance loader performance in all conditions with correct ballasting. Order a ballast box extension to add even more ballasting to the rear.

Part number	Model	Description
BW15073	1026R, 2320, 2520, 2720, 2025R, 2027R, 2032R, 3036E, 3320, 3520, 3720, 4320, 4520, 4720, 4049M/R, 4066M/R	Ballast Box for tractor
BW15074	1026R, 2320, 2520, 2720, 2025R, 2027R, 2032R, 3036E, 3320, 3520, 3720, 4320, 4520, 4720, 4049M/R, 4066M/R	Ballast Box Extension for ballast box BW15073



Rear Wheel Weights

Properly ballast your tractor while providing superior traction for jobs on slippery terrain, a plus when loading or blowing snow.

Part number	Model	Description
BM17972	1026R	22.5 kg (50 lbs)
BM17965¹	2025R, 2027R, 2032R, 2320, 2520, 2720, 3036E	27 kg (60 lbs)
BM17968²	3320, 3520, 3720, 3036E, 3033R, 3038R, 3045R, 4320, 4520, 4720, 4049M/R, 4066M/R	23.6 kg (52 lbs)
T19293	3320, 3520, 3720, 3036E, 3033R, 3038R, 3045R, 4320, 4520, 4720, 4049M/R, 4066M/R	50 kg (110 lbs)
BM17973	1026R	32.5 kg (72 lbs)
BM17969	3036E	20.5 kg (45 lbs)

¹ Requires BM17987 mounting hardware

² Requires LVB25004 mounting hardware



Quik-Tatch Weights

Ballasting is made easy with these individual weights. Moulded-in handles make installation and removal easy.

Part number	Model	Description
R66949	1026R, 2320, 2520, 2720, 2025R, 2027R, 2032R, 3320, 3520, 3720, 3036E, 3033R, 3038R, 3045R, 4320, 4520, 4720, 4049M/R, 4066M/R	Open station and Cab 19 kg (42 lbs)
BM19780	1026R, 2320, 2520, 2720, 3320, 3520, 3720, 3036E, 3033R, 3038R, 3045R, 4320, 4520, 4720, 4049M/R, 4066M/R	Open station and Cab 32 kg (70 lbs)



Tyre Chains

Front and rear chains easily slip over tractor tyres to provide essential traction in slippery conditions like snow and ice.

Part number	Model	Description
TY15958	1026R	Rear Chains 26 x 12-12, R3 & R4
TY4453	2520, 2720, 2025R, 2027R, 2032R, 3036E, 3320, 3520, 3720, 3033R, 3038R, 3045R	Rear Chains (open station) 15-19.5, R4/11.2-24, R1
TY4457	3036E, 3320, 3520, 3720, 3033R, 3038R, 3045R	Rear Chains 41 x 14.00-20, R3
TY15988	4320, 4520, 4720, 4049M/R, 4066M/R	Rear Chains 44 x 18.00-20, R3
TY15201	4320, 4520, 4720, 4049M/R, 4066M/R	Front Chains 10-16.5, R4
TY4451	2320, 2025R	Rear Chains 8.3-24, R4
TY15653	2320, 2520, 2720, 2025R, 2027R, 2032R, 3036E, 3320, 3520, 3720, 3033R, 3038R, 3045R	Front Chains (open station) 7.0-14, R1
TY15651	3036E, 3320, 3520, 3720, 3033R, 3038R, 3045R	Front Chains 25 x 18.50-14, R4
TY4462	4320, 4520, 4720, 4049M/R, 4066M/R	Rear Chains 13.6-28, R1
TY16202	4320, 4520, 4720, 4049M/R, 4066M/R	Rear Chains 17.5 x 24, R4



OPTIMISE MOWING PERFORMANCE



Material Collection Systems

Collect and carry on while leaving a flawless finish.

Part number	Model	Description
RA1176173	MCS 345H	Chute for 60" deck (non-auto connect prior to 2009)
RA1176160	MCS 345H	Chute for 60" deck (auto connect)
RA1199613	MCS 345H	Chute for 72" deck (non-auto connect prior to 2009)
RA1176161	MCS 345H	Chute for 72" deck (auto connect)
LVB25362	MCS 345H	Kit, rear hydraulic quick coupler
LVB25415	MCS 345H	Hydraulic Coupling Adapter Kit
RA1174507	MCS 345H	Parking Stand (if no caster wheels are installed)
BM22536	MCS 580 (600 litre), MCS 580 (850) litre	Parking Stand
BM22539	MCS 580 (600 litre), MCS 580 (850) litre	Fill Indicator
BLV10156	MCS 345H	Caster Wheels
BM22537	MCS 580 (600 litre), MCS 580 (850) litre	Caster Wheels (large)
RA1174509	MCS 345H, MCS 580 (600 litre), MCS 580 (850) litre	Rear Light Kit
BLV10138	MCS 580 (600 litre)	Allows installation to 3-point-hitch of 1026R
BM21301	MCS 580 (850) litre	Chute for 48C deck
BM21526	MCS 345H, MCS 580 (600 litre), MCS 580 (850) litre	Chute for 54C/D deck X Series and 2320/2520 D decks
BM21493	MCS 345H, MCS 580 (600 litre), MCS 580 (850) litre	Chute for 62C/D deck X Series and 2320/2520 D decks
BLV10164	MCS 580 (600 litre)	Chute for 54D deck of 1026R
BM22535	MCS 580 (600 litre)	Chute for 60D deck of 1026R
BM22532	MCS 580 (600 litre)	Att. parts (X Series) w/ hitch incl. rear couplers
BM22533	MCS 580 (600 litre)	Att. parts (X Series) w/o hitch incl. rear couplers
BM22534	MCS 580 (600 litre), MCS 580 (850) litre	Att. parts (2x 20) incl. couplers

Choose Your Width

Our mowing decks come in three different widths, with an optional material collection system for even more flexibility.

	DriveOver with AutoConnect mover decks			DriveOver with manual connect	
	54"	60"	72"	54"	62"
1026R	■	■			
2025R				■	■
2027R					■
2032R					■
3033R		■	■		
3038R		■	■		
3045R		■	■		



Independent Mower Lift Kits

Independent lift kit allows the deck to lift independently of the 3-point hitch, allowing you to keep mower decks on when using rear-mounted implements.

Part number	Model
LVB25630	1026R, 2025R, 62" Mower
BLV10476	2032R, 2520, 2720, 54" Mower, 60" Mower, 62" Mower, 72" Mower
BLV10079 ¹	3033R, 3038R, 3045R, 60" Mower, 72" Mower

¹ Please order LVU27092 and LVU27093 for installation on 3R tractors

MAKE YOURSELF MORE COMFORTABLE



Armrest Kit

Armrests provide additional support and comfort for long days in the seat. Pivot armrest up and out of the way when exiting tractor. (Armrest kit standard on seat with cab units)

Part number	Model	Description
LVB25501	4320, 4520, 4720,	Open station



Cruise Control

Stay on the move with cruise control.

Part number	Model	Description
LVB25866	3320, 3520, 3720, 4320, 4520, 4720	Open station and cab Automotive Cruise/ Motion Match Upgrade Kit
BLV10486	3036E (serial number 610001-)	Open station and cab Cruise Control*
BLV10459	3036E (serial number -610000)	Open station and cab Cruise Control*
BLV10388	4049M/R, 4066M/R	Open station Cruise Control

*mechanical cruise



Vertical Exhausts

Direct exhaust up and over the operator's head. The perfect choice for exhaust-sensitive applications such as certain vegetation.

Part number	Model	Description
LVB25884	3320, 3520, 3720	Open station and cab
LVB25765	4320, 4520, 4720	Open station and cab
BLV10607	3033R, 3038R, 3045R	Open station and cab
BLV10609	4066M, 4066R	Open station and cab



Enhance Your Visibility



Forward Lighting Kit

Enjoy increased visibility up front when working in dark conditions. Two lights mount to brush guards located on the Roll Over Protection Structure. (Forward lighting kit standard on cab units)

LVB25546: 1026R, 2320, 2520, 2720, 2025R, 2027R, 2032R, 3320, 3520, 3720, 3033R, 3038R, 3045R, 4320, 4520, 4720, 4049M, 4066M
Open Stations



Beacon Light

For added safety enhance visibility with this amber-coloured, rotating high-intensity light.

LVB24852: 3320, 3520, 3720, 3033R, 3038R, 3045R, 4320, 4520, 4720, 4049M/R, 4066M/R
Cab Machines



Rear Work Light Kits

Shed some light, especially when working with rear implements.

LVB25547: 1026R, 2320, 2520, 2720, 2025R, 2027R, 2032R, 3036E, 3320, 3520, 3720, 3033R, 3038R, 3045R, 4320, 4520, 4720, 4049M, 4066M
Open Stations

LVB24853: 3320, 3520, 3720, 3033R, 3038R, 3045R, 4320, 4520, 4720, 4049R, 4066R
Cab Units

1

Being seen and seeing clearly all around you is essential for a productive and safe working day. John Deere visibility enhancement solutions let you see and do more.

2

3





4

External Tool Boxes

A convenient place to hold all of your tools. This heavy duty steel box can easily be installed in three different tractor areas.

LVB24930: 3320, 3520, 3720, 3033R, 3038R, 3045R
Cab Units

LVB24865: 4320, 4520, 4720, 4049M/R, 4066M/R
Cab or Open Station



5

External Mirror

Get the full picture by getting a wide, rear view of the road or field behind you. Kit includes a left side and right side mirror for cab tractors.

LVB24844: 3320, 3520, 3720, 3033R, 3038R, 3045R, 4320, 4520,
4720, 4049R, 4066R
Cab Units



6

Rear Wiper

Ensure clear visibility to the rear in inclement weather. Kit includes a wiper and nozzle for washer fluid.

LVB24856: 3320, 3520, 3720, 3033R, 3038R, 3045R, 4320, 4520,
4720, 4049R, 4066R
Cab Units





Hydraulics, Power Beyond

Get power to the rear of your tractor in order to operate attachments that contain a control valve such as a backhoe, log splitter or snowblower.



Part number	Model	Description
BLV10381	2320, 2520, 2720, 2025R, 2027R, 2032R	Open station
LVB26064 ¹	3320, 3520, 3720, 3033R, 3038R, 3045R	Open station
LVB26069	3320, 3520, 3720	Cab
BLV10462 ²	3033R, 3038R, 3045R	Cab
LVB26066 ¹	4320, 4520, 4720	Open station
LVB26071 ¹	4320, 4520, 4750	Cab
BLV10039 ³	4049M/R, 4066M/R	Open station and cab
LVB25956	1026R	Open station and cab

¹ Compatible with model year 2011 and younger

² Requires part LVA17592 for installation

³ Only compatible with 4M if D170 Loader installed

Hydraulic Rear Couplers

Quickly and effortlessly remove your hydraulic hook-ups with these couplers; routes dual mid remotes to rear.



Part number	Model	Description
LVB25837	1026R	Open station
LVB25606	2320, 2520, 2720, 2025R, 2027R, 2032R	Open station

PROFIT FROM HYDRAULIC POWER

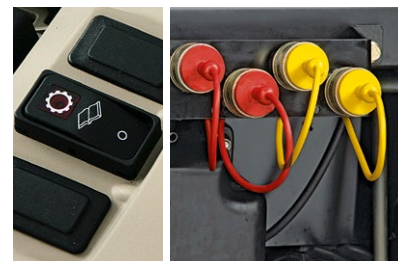
The hydraulic system makes easy work of powering PTOs, hitches and front loaders. Get the most out of it with attachments optimising its performance.

Hydraulic Diverters

Divert power to the rear of your tractor with this convenient toggle switch. Engage to hydraulically operate rear implements with your loader joystick. Disengage to transfer power back to front implements.

Part number	Model	Description
LVB26075	3320, 3520, 3720	Open station
LVB26076	3320, 3520, 3720	Cab
BLV10365 ¹	3033R, 3038R, 3045R	Open station
BLV10649	3033R, 3038R, 3045R	Cab
LVB26033	4320, 4520, 4720	Cab
BLV10041	4049R, 4066R	Open station and cab

¹ Compatible with model year 2011 and younger



Fourth and Fifth SCV-kits

Provides two additional pairs of rear SCVs. The kit can be field installed with or without a loader. The functions are completely separate from the loader.

Part number	Model	Description
LVB26035 ¹	3320, 3520, 3720, 3033R, 3038R, 3045R	Open station
LVB26072 ²	4320, 4520, 4720,	Cab
BLV10050 ³	4049M, 4066M	Open station

¹ Compatible with model year 2011 and younger model. Year 2015 requires LVA17456 for installation.

² Compatible with model year 2011 and younger requires LVA16893 for installation

³ Additional parts required for installation



GET CONNECTED

Make changes as easily as you change your mind. Simply drive in, pick up attachments, secure with pins and hydraulics and you're done.



3-point Front Hitch

Part number	Model	Description
LVB26196	1026R	3-point Front Hitch
LVB24811 ¹	2320, 2025R, 2027R, 2032R	3-point Front Hitch
LVB26111 ²	3033R, 3038R, 3045R	3-point Front Hitch
LVB25878	3320, 3520, 3720, 3033R, 3038R, 3045R	3-point Front Hitch
BLV10086	4049M, 4066M, 4049R, 4066R	3-point Front Hitch
LVB26108	1026R	Angling Cylinder Kit for 3-point hitch LVB26196
BLV10088	4049M/R, 4066M/R	Lift Arms Cat 1 for hitches LVB26111/BLV10086
BLV10087	4049M/R, 4066M/R	Lift Arms Cat 0 for hitches LVB26111/BLV10086

¹ Part LVB24889 required for installation

² Part LVB25875 required for installation



Front PTO

Part number	Model	Description
BLV10166	1026R	2000-rpm Front PTO
BLV10475	2027R, 2032R, 3320, 3520, 3720, 3033R, 3038R, 3045R	2000-rpm Front PTO
LVB24900	2320, 2520, 2720, 2025R	2000-rpm Front PTO (with quick tatch)
LVB24890	2320, 2520, 2720, 2025R	2000-rpm Front PTO (without quick tatch)
BM18695	2027R, 2032R	2000-rpm Front PTO
BLV10097	4049M/R, 4066M/R	1000-rpm Front PTO (rotates clockwise)
BLV10098	4049M/R, 4066M/R	1000-rpm Front PTO (rotates counter clockwise)
BLV10093	4049M/R, 4066M/R	2000-rpm Front PTO (rotates counter clockwise)
BLV10160	1026R	Front Attaching Support
LVB24895	2320, 2025R, 2027R, 2032R	Front Attaching Support
BLV10452	3320, 3520, 3720, 3033R, 3038R, 3045R	Front PTO Bracket
LVB24849	3320, 3520, 3720, 3033R, 3038R, 3045R	Front PTO Shield
LVB25386	3320, 3520, 3720, 3033R, 3038R, 3045R	Front PTO Kit



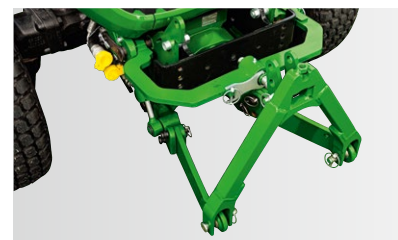
Front Quick Hitch

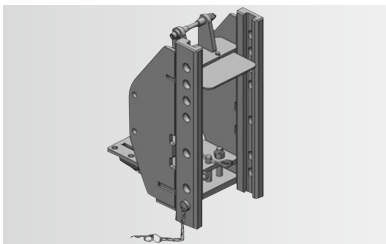
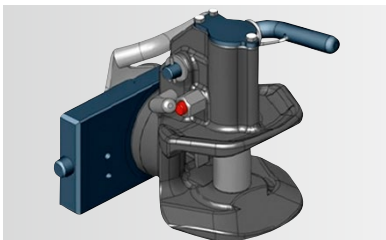
Part number	Model	Description
BLV10159	1026R	Front Quick Hitch
LVB24898	2320, 2520, 2720, 2025R, 2027R, 2032R	Front Quick Hitch
LVB24899	2025R, 2027R, 2032R	Front Quick Hitch / Mid-mount Mower Combo
LVB24901	2025R, 2027R, 2032R, 2320, 2520, 2720	Angling Cylinder Kit for quick hitch LVB24898



Quick Attach A-Frame

Part number	Model	Description
BLV10316	1026R, 2025R, 2027R, 2032R, 3120, 3320, 3520, 3720, 3033R, 3038R, 3045R	Quick Attach A-Frame
BLV10478	4049M, 4066M, 4049R, 4066R	Quick Attach A-Frame





Height-adjustable Trailer Hitch*

This John Deere height-adjustable trailer hitch system offers a flexible use of different hitch types allowing low and high position trailer coupling.

Part number	Model	Description
VLE2407	3320, 3520, 3720, 3033R, 3038R, 3045R	Height-adjustable Trailer Hitch
VLE2403	3320, 3520, 3720, 3033R, 3038R, 3045R	Ball-type insert with handle (with 50 mm ball)
VLE2575	3320, 3520, 3720, 3033R, 3038R, 3045R	Ball-type insert with handle (without the ball)
MCXFA1372	3320, 3520, 3720, 3033R, 3038R, 3045R, 4049M/R, 4066M/R	50 mm Ball
VLE6216	4049M/R, 4066M/R	Height-adjustable Trailer Hitch
VLE2004	4049M/R, 4066M/R	Ball-type insert with handle (with 50 mm ball)
VLE2576	4049M/R, 4066M/R	Ball-type insert with handle (without the ball)
VLE2578	4049M/R, 4066M/R	Automatic Wagon Hitch with cylindrical pin 31 mm
VLE2410	4049M/R, 4066M/R	Manual Wagon Hitch with cylindrical pin 31 mm

* All VLE parts can be ordered on the Vapormatic website www.vapormatic.com



Wagon Hitch EEC*

Part number	Model	Description
LVB26109	1026R	Wagon Hitch, upper link mount
DMB210242	2025R	Wagon Hitch, upper link mount
DMB210245	2027R, 2032R	Wagon Hitch, upper link mount
LVB25799	3036E	Wagon Hitch, upper link mount
LVB19572	3033R, 3038R, 3045R	Wagon Hitch, upper link mount
BLV10122	4049M/R, 4066M/R	Wagon Hitch, upper link mount
LVB19573	4610, 4710, 4320, 4520, 4720	Wagon Hitch, upper link mount

* Road homologated



Drawbar Hitch EEC*

Part number	Model	Description
BLV10012	3033R, 3038R, 3045R	Drawbar, complete with clevis
BLV10011	4320, 4520, 4720	Drawbar, complete with clevis

* Road homologated



Mid PTO and Mid PTO Controls

Properly equip your tractor to operate your mid-mount mower or 3020 Series front implements.

Part number	Model	Description
LVB25537	3320, 3520, 3720, 3033R, 3038R, 3045R	Open station and cab Mid PTO
LVB24847	4320, 4520, 4720	Cab Mid PTO Controls



Telescoping Draft Links Kit

Reduce the amount of effort needed to attach 3-pt. hitch implements. This kit lets you make small adjustments when trying to line up the implements, without having to move the tractor.

Part number	Model	Description
LVB25308	3320, 3520, 3720, 3033R, 3038R, 3045R	Open station and cab
LVB25309	4320, 4520, 4720	Open station and cab
BLV10375	4049M/R, 4066M/R	Open station and cab



KEEP YOUR TRACTOR UP AND RUNNING

Filter Paks

Almost every filter you need to maintain your tractor in one convenient package. Keep your tractor running at its peak; kit contains: two oil filters, one air filter, one fuel filter and one hydraulic filter.



Part number	Model
LVA21200	1026R
LVA21201	2520, 2720, 2027R, 2032R
LVA21202	3320, 3520, 3720, 3033R, 3038R, 3045R
LVA21203	4320, 4520, 4720, 4049M/R, 4066M/R
LVA21192	4010
LVA21197	4100, 4110
LVA21193	4115
LVA21198	4200, 4300, 4400
LVA21194	4210, 4310, 4410
LVA21199	4500, 4600, 4700
LVA21195	4510, 4610, 4710
LVA21204	2320, 2025R
LVA21201	2520, 2720, 2027R, 2032R
LVA21202	3320, 3520, 3720
LVA21203	4320, 4520, 4720

AccuLuber™ Grease Gun Kit for Lube-Shuttle™ Grease Cartridges, John Deere



Electric battery operated grease gun, 14.4V Ni-Cd, 3000mAh. A powerful DC motor drive gives up to 400 bar of grease pressure. The maximum pressure is limited by an inbuilt relief valve. With LubeShuttle, simply remove the cartridge cap, insert into the zinc plated steel body, screw in and you are ready to go! Double performance compared to Ni-Cad battery operated AccuLuber.

Part number	Model	Description
MC3425401	1026R, 2520, 2720, 2025R, 2027R, 2032R, 3036E, 3320, 3520, 3720, 3033R, 3038R, 3045R, 4320, 4520, 4720, 4049M/R, 4066M/R	EU version
MC3425418	1026R, 2520, 2720, 2025R, 2027R, 2032R, 3036E, 3320, 3520, 3720, 3033R, 3038R, 3045R, 4320, 4520, 4720, 4049M/R, 4066M/R	UK version

