

*Faster.  
Stronger.  
Smarter.*



## 6230R/6250R

230-250 Engine  
Horsepower Tractors



JOHN DEERE

***Faster.  
Stronger.  
Smarter.***

At John Deere, our goal has always been to deliver the highest quality machinery, built to the highest standards. The latest extension of our 6R Series—the 6230R and 6250R—deliver on this goal with unmatched performance and on-road capabilities.

Nimble. Quick. Reliable. Durable. These machines are built for speed, agility and power. With a high power density for quick acceleration, 10.5 t rear hitch capacity, and up to 300 hp, these two new tractors are all about transport and hauling big loads.

Moreover, they're intelligent beasts with the game-changing CommandPRO™ control on board. Superb ergonomics and ultimate tractor and implement control in the palm of your hand.

Get to know the 6230R and 6250R tractors.





## Contents

4	<b>OVERVIEW</b>
6	<b>ENGINES</b>
8	<b>TRANSMISSIONS</b>
10	<b>COMMANDPRO CONTROL</b>
12	<b>DRAWBAR EFFICIENCY</b>
14	<b>COMFORT AND STABILITY</b>
16	<b>COMFORTVIEW CAB</b>
18	<b>LED LIGHTS</b>
20	<b>HYDRAULICS, HITCHES AND PTO</b>
22	<b>FRONT LOADERS</b>
24	<b>PRECISION AG TECHNOLOGY</b>
26	<b>PARTS &amp; SERVICE</b>
28	<b>SPECIFICATIONS</b>

**EXCEPTIONAL ACCELERATION**

Up to 300 hp (with Intelligent Power Management (IPM) and 9.5 t vehicle weight provide excellent power-to-weight ratio for quick acceleration

1

**IMPRESSIVE CAPACITY**

The fuel consumption during transport applications is **12% lower\*** than the average of competitive tractors tested

2

**CommandPRO™**

The future of tractor operation with tractor and implement control in the palm of your hand

3

**DESIGNED TO LAST**

Full frame design with a longer wheelbase allows heavy loader and rear hitch work with less stress

4

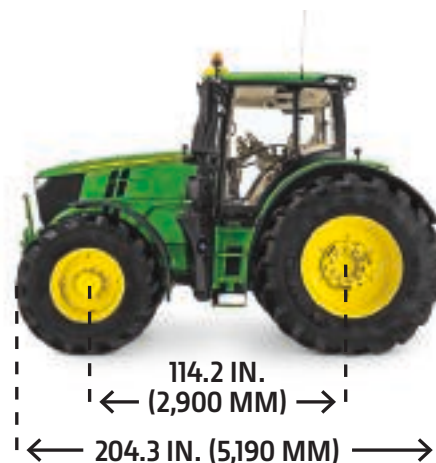
**COMFORT AND AGILITY**

Triple-Link Suspension (TLS) Plus front axle suspension, HCS Plus cab suspension and Variable Ratio Steering for improved ride quality

5

## Ahead of the Game

The 6R Series embraces new high-end models with impressive performance and on-road capabilities. Like all 6R tractors, the new models are Stage IV-compliant with a diesel exhaust fluid (DEF) system that's been refined by John Deere engineers.



**6230R / 6250R**

- 6250R rated at 250 hp (300 hp max with IPM)
- Outstanding power density
- 5 large frame models from 175 to 250 hp
- Stage IV compliant with DEF

Model	Weight	Rated Engine Horsepower (97/68EC)	Max. Engine Horsepower with IPM (97/68EC)	Engine Type	Transmission Options
6230R	9.3 t	230	279	John Deere PowerTech™ PSS (6.8 L)	Infinitely Variable Transmission (IVT)
6250R		250	300		

\*John Deere 6250R—more variotractor test, profimagazine 6/2018.

### SUPERB HYDRAULICS

42 gpm (160 lpm) max hydraulic flow at 1,500 rpm. Up to six rear selective control valves (SCVs)

6

### PERFORMANCE

Efficient 1.8 gal (6.8 L) John Deere engines with up to 250 hp rated power, John Deere DPF and SCR technology

7

### LARGE REAR AND FRONT TIRES

New tire sizes available, including 580, 650 and 800 sizes.

8

### IVT TRANSMISSION

An IVT designed to run at full transport speeds at lower RPMs, delivering total fluid savings

9

### LOW RUNNING COSTS

Lifetime DPF, low 2-3% DEF consumption, 750-hour engine oil interval, and 12% less fuel consumption\*\* during transport

10



### MAXIMUM STABILITY

The unique John Deere full frame design forms the rugged backbone of all 6R Series tractors. Engine and transmission are mounted within the frame on insulating blocks that reduce stress and operating noise. The perfect platform for a John Deere front loader.

\*\*Percentage based on average fuel consumption of other competitors measured during June 2018 DLG Power Mix Test.



## A Substantial Performance Boost

The 6230R and 6250R tractors are powered by our enhanced PowerTech PSS engine with series turbochargers—now designed to generate even more power, while consuming less fuel and meeting the demanding Stage IV emissions standards.

---

The enhanced PowerTech PSS 6.8 L engine offers new advanced components, including a cooled cylinder head that provides superior heat management and reinforced steel pistons, resulting in exceptional power density while maintaining long engine life.

## Fluid Efficiency

Transport without worry of fluid consumption with the wide Infinite Variable Transmission (IVT) ratio that helps reduce engine speed and minimize total fluid consumption cost.

• 1,300 ENGINE RPM AT 25 MPH (40 KM/H)

• 1,630 ENGINE RPM AT 31 MPH (50 KM/H)

## Larger Cooling Package

To cool down all this power we've included a larger cooling package that includes a viscous fan drive. A larger, redesigned air intake also helps keep this much power in check.



**LONG 750 H OIL CHANGE INTERVAL**

**LOW 2-3% DEF CONSUMPTION**

## Proven Technology

The high power output of our 6-cylinder 6.8 L engines is made possible by our refined 4-valve High Pressure Common Rail (HPCR) technology with an injection pressure of up to 2,500 bar. The PSS engines in the 6230R and 6250R use a 2-stage turbocharging system in which the Variable Geometry Turbocharger (VGT) multiplies the pressure created by a fixed vane turbocharger.



**RATED EHP (250 EHP)**

**MAX EHP W/BOOST (300 EHP)**

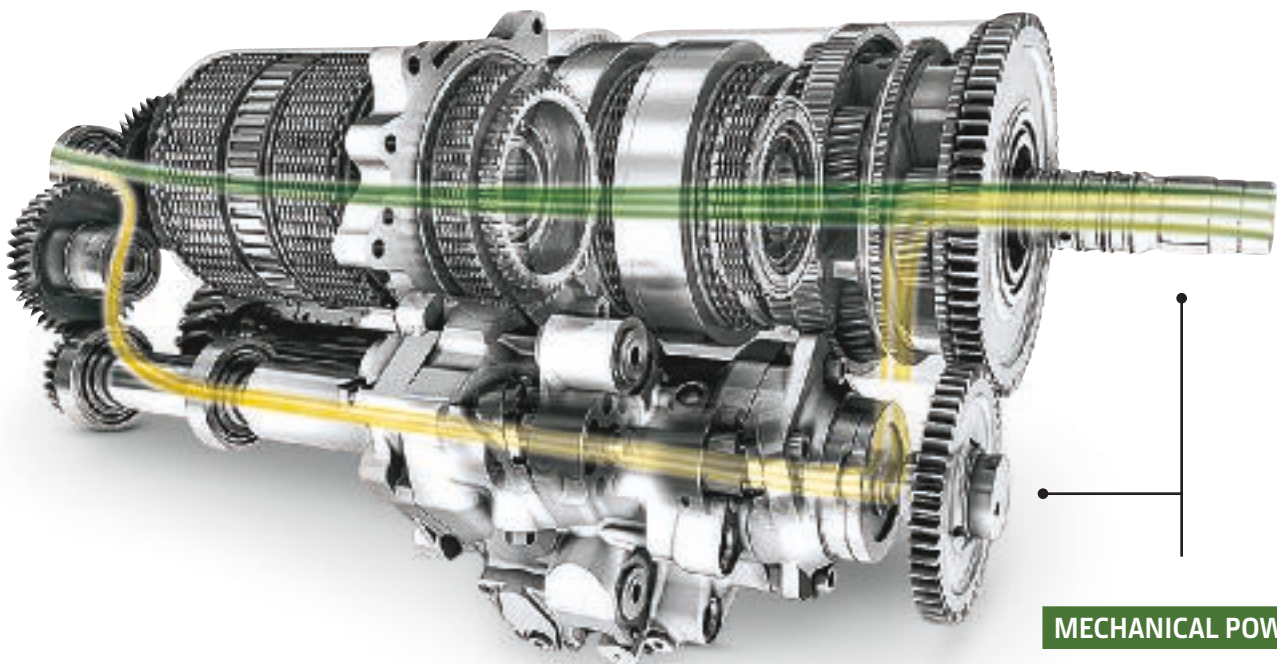
**MORE THAN 90% EFFICIENT IN GETTING HP TO THE DRAWBAR**

## Premium Transmissions For Premium Tractors

The refined performance and impressive capabilities of the 6230R and 6250R benefit from the upgraded top-of-the-line transmissions—IVT and optional CommandPRO.™

Their ease of operation and strength complement the power and torque of the more powerful 6R tractors with outstanding fuel efficiency, delivering exceptionally high levels of operating comfort.

IVT has been optimized for quick acceleration and durability at full engine power. And you have your choice of 40k or 50k based on your acceleration and speed requirements.



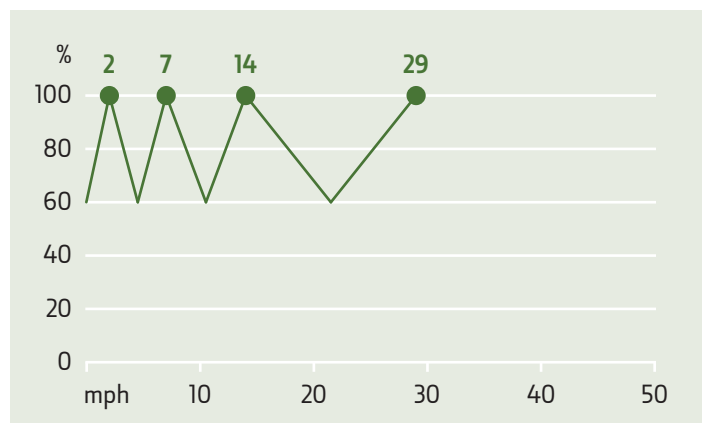
MECHANICAL POWER

HYDROSTATIC POWER





- SET-SPEED ADJUSTING WHEEL
- SPEED BAND TWO
- SPEED BAND ONE



IVT delivers 100% mechanical power at the following working speeds: 2 mph (3.5 km/h), 7 mph (11 km/h), 14 mph (22.5 km/h), and 29 mph (47.2 km/h). This results in superb transmission efficiency, close to that of mechanical transmissions. In fact, IVT is always using more than 60% of the available mechanical power.

# New CommandPRO Control

The future of tractor operation is now. Introducing CommandPRO. Experience seamless control of your tractor and implements all in the palm of your hand. Enjoy zero to top speeds with a simple push, eleven customizable buttons to match the job, options to configure various set speeds, and inching ability to keep you in command of your operation like never before.

## THE ULTIMATE DRIVING STRATEGY:

- Command top and zero speed simply with one push or pull
- Unique inching control from 0 up to 3.1 mph (5 km/h)
- Simultaneous pedal and joystick driving
- ActiveZero function keeps the output speed actively at 0 mph (0 km/h) until command for acceleration is given



## SETTINGS MANAGER

Reducing the set up time for all your different applications, the Settings Manager allows you to save all your machine settings. For example, set and save configurations for the engine, SCVs and rear hitch, as well as the CommandPRO control itself. This enables you to instantly recall your individual settings for implements or different operators.



**1**

Acceleration response button with three settings

**2**

Travel speed adjustment wheel

**3**

11 Reconfigurable buttons:

- Front/Rear Hitch
- Front/Rear PTO
- SCVs
- iTEC
- AutoTrac
- ISOBUS functions
- Engine set speed

**4**

Travel set speed buttons 1 and 2

**5**

Activation button

# Excellent Drawbar Efficiency: Less Input, More Output

How much power does a tractor actually deliver? It's not all about engine size—that can be deceiving. What really counts is what's delivered at the drawbar. And John Deere 6R Series large frame tractors offer outstanding drawbar efficiency and productivity with minimum fuel consumption.

**SUPERIOR EFFICIENCY**

**THE NEW BENCHMARK**

LARGER COOLING PACKAGE

MAX 300 EHP

FRONT HITCH AND  
COMPATIBLE MONSTER  
WEIGHT AVAILABLE

FRONT PTO

TLS PLUS





VRS (OPTIONAL)

CommandPRO (OPTIONAL)  
IVT (LOW RPMs AT MAX TRANSPORT SPEED)

REPOSITIONED AIR INTAKE

10.5 T HITCH  
LIFT CAPACITY

GROUP 48 TIRES  
FOR ADDITIONAL  
CROP CLEARANCE

LONGER WHEELBASE



## Smooth Operator

TLS Plus guarantees optimum traction and field performance, applying up to 10% more power to the ground.\* It also ensures higher operator comfort, reduces operator fatigue and increases productivity, while Variable Ratio Steering improves in-field maneuverability.

---

6230R and 6250R tractors further benefit from extra comfort and stability that comes with the longer 114 in. (290 cm) wheelbase.

---

\*Compared to an unsuspended front axle without TLS.



### ADAPTIVE FRONT AXLE

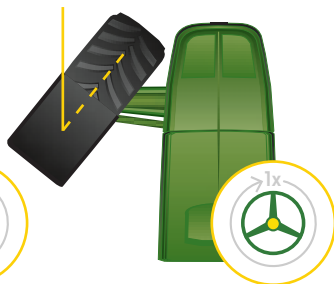
The self-levelling TLS Plus automatically adjusts sensitivity and suspension rate, and synchronizes with hitch sensing to compensate power hop under heavy pull conditions.



VARIABLE  
RATIO  
STEERING  
OFF



VARIABLE  
RATIO  
STEERING  
ON



### VARIABLE RATIO STEERING

Improves operator comfort, requiring less hand movement and less steering effort when turning on the headland or in confined spaces. The resulting faster turning of the steering wheel increases hydraulic flow, leading to quicker response of the tires.



### ENHANCED OPERATOR COMFORT

The intelligent hydro-pneumatic cab suspension (HCS Plus) offers more driving comfort in the field and on the road. Input from the acceleration and TLS sensor causes the cab suspension controller to increase or decrease the amount of oil in the shock absorber ram. This semi-active system delivers ultimate comfort in every situation.



**COMMANDARM AND GENERATION 4 COMMANDCENTER**

The CommandARM, with its optional electronic reconfigurable joystick, provides a thoroughly intuitive operating interface. All the controls you need for daily work are available at your fingertips: SCVs, AutoTrac™, iTEC, air conditioning, light, radio, 4WD and hitch depth control. Mounted on the CommandARM, the Generation 4 CommandCenter has easy-to-use tablet-like swipe functionality and monitors everything you need for productive and efficient work.

**GENERATION 4 COMMANDCENTER™**

**INTUITIVE COMMANDARM™ OPERATION**

## A Commanding View

Ergonomic excellence, all-round visibility and comfort are the hallmarks of the spacious ComfortView cab. All controls and machine/operator interfaces have been optimized for logical, intuitive use.

The 6230R and 6250R are equipped with the CommandARM and Generation 4 CommandCenter with Bluetooth connectivity. The sloping engine hood and excellent all-round visibility give operators an unrivalled overview of their surroundings. The optional panorama roof expands the operator’s field of vision, providing up to 30% more practical visibility when working with a front loader.

	4200 CommandCenter	4600 CommandCenter
Touchscreen	8.4" (21.3 cm)	10" (26.4 cm)
Tractor Controls	■	■
AutoTrac	■	■
ISOBUS Implement Control	■	■
Section Control & Documentation*	■	■
Wireless Data Transfer	■	■
Remote Display Access	■	■
Video inputs	1	up to 2

\*Depending on the ISOBUS capabilities (AEF certification level) of the implement.



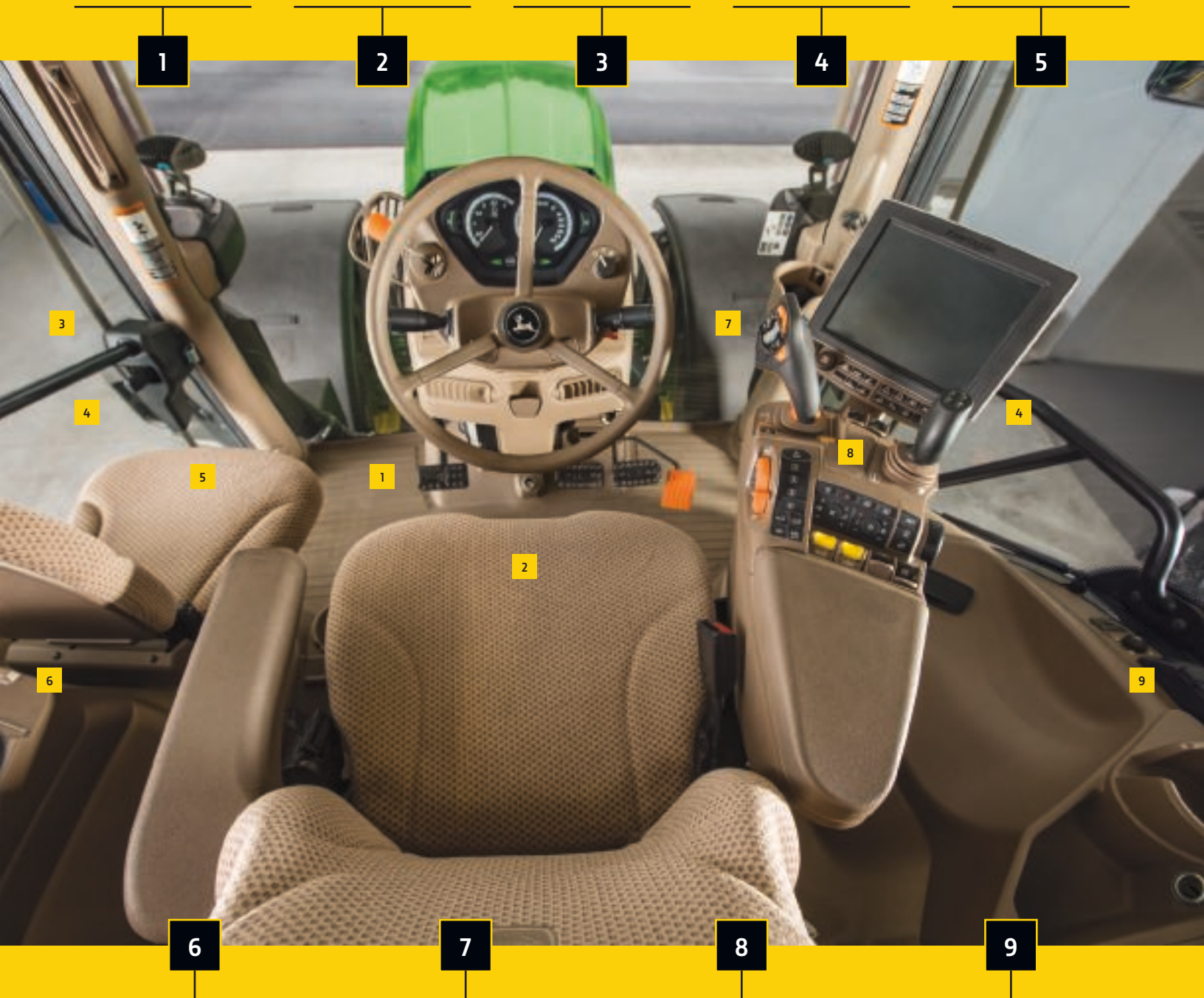
Spacious, low noise of 71dB(A) and 20 LEDs provide maximum comfort and visibility

Swivelling and adjustable **air suspended operator seat** adapts to the weight of the operator

Wide-angle, electrically adjustable telescopic **heated mirrors** (optional)

Left and right **Panorama doors** for unobstructed visibility. A left-hand side B-post version is also available

Comfortable, foldable **passenger/instructor seat** in every 6R



1

2

3

4

5

3

4

5

1

2

7

8

4

6

9

6

7

8

9

Left hand **storage compartment**. Also available as refrigerator

**CommandPRO** control for tractor or ISOBUS functions

**CommandARM** with **Generation 4 CommandCenter**

Multiple cup holders, storage areas and power outlets

## Light Up The Night

Nature doesn't respect normal working hours. Because of this, getting the job done could mean working in the dark.

Typically, transport, cultivating, and especially harvesting can require extended night shifts. Our factory-installed lighting packages provide a pool of bright light around your 6R Series. It comprises:



1

### CAB LIGHTS

Up to 12 cab lights (LED optional) provide 360° visibility. Integrated into the front and rear of the roofline for safe machine handling and positioning.

2

### BELTLINE AND REAR FENDER LIGHTS

4 adjustable belt line and rear fender work lights (LED optional) increase operational flexibility.

EXTEND WORKING HOURS

RAISE PRODUCTIVITY

2



LED lights provide natural low temperature light, reducing eye and body fatigue—and they last longer.



Perfectly balanced illumination inside and outside the cab allows you to work through the night.



Programming the Generation 4 CommandCenter for perfect night work lighting couldn't be easier.

## Making Hard Work Easy

The closed-center, pressure and flow compensated hydraulic system in the 6230R and 6250R series has been engineered for maximum durability and reliability by optimizing the number of hydraulic components and connections, which also makes it extremely efficient.

The system in the new 6230R and 6250R models delivers a powerful 42 gpm (160 lpm) at 1,500 rpm, with enhanced operating characteristics. Selective Control Valves (SCVs) stack components have been clustered in a supremely user-friendly way, with up to six rear SCVs and Power Beyond couplers. Wide hitch rails allow generous clearance for PTO tasks, and the layout gives the operator an unobstructed view of the rear hitch and connecting points when maneuvering for implement coupling.

### FRONT HITCH SCVs AND PTO

The front hitch has a maximum lift capacity of 5 t (5,000 kg). It can also be ordered with up to 2 SCVs and a front PTO. All of them are iTEC capable.



### TOTAL HYDRAULIC CONTROL

The intuitive CommandCenter controls allow you to manage the Selective Control Vales (SCVs) on the move. With optional electronic SCVs the large digital display lets you monitor flow rates and times, keeping you in control of all the hydraulic systems.



### 42 GPM (160 LPM) FLOW

More power to your implements at only 1,500 rpm

1

### UP TO 6 REAR SCVs

Perfectly clustered for ease of operation

2

### INCREASED LIFT CAPACITY

Front hitch lift capacity of 5 t (5,000 kg) and rear hitch lift capacity of 10.5 t (10,500 kg)

3

## Rear Hitch

With a maximum lift capacity of over 23,000 lbs., the rear hitch is designed to work a variety of implements to meet all your needs.



## Draft Links with Hook Ends

Featuring a set of hooks instead of traditional ball ends, this hitch type offer increased strength, enabling operators to quickly complete hitch and unhitch implements.

4

### TOTAL HITCH CONTROL

Generation 4 CommandCenter controls for three-point hitch set-up, depth, height, rate of drop, slip and damping

5

### REAR PTO CHOICE

Several PTO options: 540/1000/1000E and 540/540E/1000

6

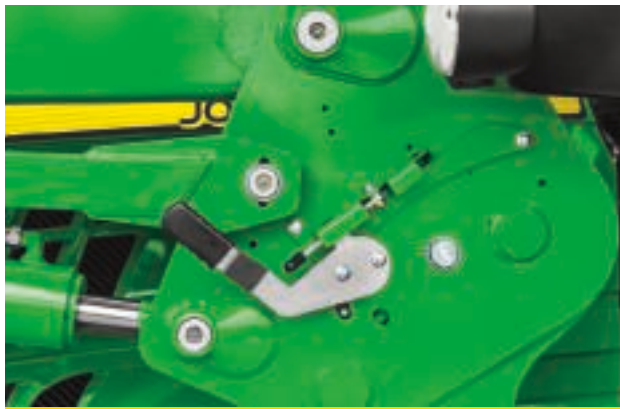
### iTEC

Automated control of front and rear implements when executing headland turns

## Raising the Game

The perfect match. Tractor, loader and implements, all designed for each other. For unrestrained performance and peerless ease of use. Easy on, easy off. The essence of productivity.

6230R and 6250R models are compatible with the 680R Loader. With two self-leveling options, this loader offers perfectly balanced application of these tractors' substantial power to the task at hand.



### AUTOMATIC MAST LATCH

Mounting our front loaders could not be quicker, safer or more convenient thanks to the patented self-correcting floating system of the built-in automatic mast latch. Separation is just as easy.



### HYDRAULIC REMOTE IMPLEMENT LATCH

Switching implements can now be accomplished quickly and easily. Hydraulic Remote Implement Latch enables the operator to attach and detach front implements using two switches located in the cab without needing to leave the operator's seat.



**COMMANDARM™ ELECTRONIC JOYSTICK**

Easily the most comfortable way to operate a front loader, the joystick offers up to five reconfigurable functions, including loader suspension.



**RETURN-TO-POSITION (RTP)**

RTP enables the operator to set and store two boom and two bucket positions for reduced fatigue during long hours of operation. Setup is done with the loader joystick and CommandCenter screen.



**LOADER SUSPENSION**

Effective damping provides a smoother ride for load, tractor and operator. Activation/deactivation is via the joystick suspension button.



## Real-Time Results

Take the next step in increasing profitability, comfort and uptime while reducing your cost of operation. With advancements like our AutoTrac™ Turn Automation and JDLink™, you get the perfect combination of technological advancements and business solutions that deliver real-time results.

---

Accessing John Deere's automatic guidance solutions starts with the new StarFire 6000 receiver. Capabilities include better signal stability for maximum uptime and new SF3 accuracy. This means the receiver always keeps you on track whatever the conditions are. And with SF3 you get repeatable results—no guidance line or boundary drift—throughout one season. The StarFire 6000 receiver works seamlessly with all John Deere guidance systems and all accuracy levels (SF1, SF3, Mobile and Radio RTK).







### AUTOTRAC TURN AUTOMATION

Intelligent Total Equipment Control integrates AutoTrac automatic steering and implement management systems to control tractor speed, front and rear mounted implements and differential lock engagement. This allows hands-free turns, while reducing soil compaction. For picture-perfect headlands and consistent crop growth.



### JDLink\*

JDLink shows you where your machines are, what they're doing, and how they're performing. Take advantage of Remote Display Access, a feature of JDLink, to remotely assist your operators with machine setup and operation. Additionally, JDLink includes Wireless Data Transfer for seamless data exchange between your machine and the office.



### OPERATIONS CENTER

Utilize the John Deere Operations Center to allocate exact field locations for your next job, view as-applied maps automatically sent from the field, easily assign work orders to your operators, and so much more. You can also analyze and share application reports with trusted partners and customers.

\*Activation/subscription required. Some additional accessories and/or components may be required. JDLink requires a cellular data connection to transfer information from machine to JDLink website. Consult your local John Deere dealer for coverage availability.



## Parts & Service

### PowerGard™

Control your operating costs and maximize performance from your machine with maintenance and repair protection programs from John Deere. There are three flexible options to choose from. See your dealer for detailed terms & conditions.

- 1 POWERGARD MAINTENANCE**  
Get regular scheduled maintenance and enjoy the full benefits and cost savings of using genuine John Deere parts.
- 2 POWERGARD PROTECTION**  
For new machines in connection with PowerGard Maintenance.
- 3 POWERGARD PROTECTION PLUS**  
For new machines in connection with PowerGard Maintenance.

### John Deere FarmSight— Profit from Insight

John Deere FarmSight dealer services support you in the daily use of your 6R tractor with the latest AMS technology. Your 6R can be equipped with JDLink and Service ADVISOR Remote.

#### UPTIME

Remote monitoring and service support designed to maximize machine uptime

#### PERFORMANCE

Monitoring of key performance indicators of individual machines to maximize productivity and efficiency.

#### LOGISTICS

Monitoring of multiple machines to optimize the efficiency of larger fleets.

#### AGRONOMICS

Help and advice for making more informed business decisions to improve productivity and profitability.



## Genuine. A Word to Take Seriously

Only John Deere Genuine Replacement Parts are built to the same stringent standards as your 6R Series tractor. They fit and function perfectly, maintain performance and reliability, optimize fuel consumption and keep your tractor strong and durable.

### GENUINE FOR A REASON

- Excellent parts availability
- Assured high performance quality
- Manufactured to OE standards

## Investing in Your 6R Pays Dividends

Personalize your 6R with genuine John Deere attachments. They will support you in making each working day more efficient, more convenient and less fatiguing. Designed and engineered by John Deere, you can be sure they'll fit properly and are built to last.

### ADD MORE

- Performance, productivity with ballasting solutions
- Versatility with genuine hitch solutions
- Comfort, convenience with accessories mounting brackets

# Specifications

TRACTOR MODEL	6230R	6250R
<b>ENGINE PERFORMANCE</b>		
Rated power (97/68EC), hp (kW)	230 (169)	250 (184)
Rated power with IPM (97/68EC), hp (kW)	270 (199)	290 (213)
Max. power (97/68EC) hp (kW)	253 (186)	275 (202)
Max. power with IPM (97/68EC) hp (kW)	280 (206)	300 (221)
Rated power (ECE-R24) hp (kW)	220 (162)	239 (176)
Rated with IPM (ECE-R24) hp (kW)	258 (190)	279 (205)
Max. power (ECE-R24), hp (kW)	243 (179)	265 (195)
Max. power with IPM (ECE-R24), hp (kW)	269 (198)	290 (213)
Constant power range, rpm	2,100–1,600	
Torque reserve, % percentage	40	
Maximum torque, Nm (at 1600 engine rpm)—without boost	1,074	1,167
Rated speed, rpm	2,100	
Manufacturer	John Deere Power Systems	
Type	PowerTech PSS	
Aftertreatment	Lifetime Diesel Particulate Filter (DPF), Diesel Oxidation Catalyst (DOC) and Selective Catalytic Reduction (SCR) using DEF	
Engine air filter	External A-Post Filter with pre-cleaning	
Aspiration	Dual turbochargers, variable geometry turbo with fixed geometry turbo in series	
Cylinders / Displacement	6 / 1.8 gal (6.8 L)	
Cooling system	Distributed cooling system with temperature controlled electric fan drive and dedicated fan for charge air cooler	
Fuel injection system & control	High pressure common rail system with up to 2,500 bar injection pressure, electronically controlled	

TRACTOR MODEL	6230R	6250R
<b>TRANSMISSIONS</b>		
CommandPRO	•	•
<b>IVT</b>		
Up to 25 mph (40 km/h)	•	•
Up to 31 mph (50 km/h)	•	•
<b>AXLES</b>		
Suspended front axle	Braked Triple-Link Suspension (TLS Plus) MFWD Axle in base; hydro-pneumatic, permanently active, triple link, self-levelling, load adjusting suspension	
Suspension range with TLS Plus	4 in. (100 mm) suspension range	
Engagement front differential lock	100% differential lock in base	
Engagement rear differential lock	Electro-hydraulic with oil cooled clutch	
Rear axle	Flange axle or rack & pinion axle	
<b>STEERING</b>		
Type	Dynamic load sensing, hydrostatic, flow metering; Variable Ratio Steering optional	
<b>HYDRAULIC SYSTEM</b>		
Type	Pressure & Flow Compensated (PFC) system with load sensing function	
Flow at rated engine speed base/option, gpm (lpm)	42 (160) [max. flow available at 1,500 rpm]	
Selective control valves	Up to 6 plus 3 mid-stack	
Power beyond	Optional	
Oil take out capacity with additional oil reservoir, l	80	

# Specifications

TRACTOR MODEL	6230R	6250R
<b>3-POINT HITCH – REAR</b>		
Type	Electronic lower link sensing; load & depth control, infinite mix, float	
Category	3N	
Maximum lift capacity at hooks	11.5 t (10,400 kg)	
Lift capacity through full lift range (OECD 610 mm)	15,432 lbs. (7,000 kg)	
Lift capacity through full lift range (OECD 1800 mm)	9,480 lbs. (4,300 kg)	
<b>3-POINT HITCH – FRONT</b>		
Type	Front hitch controlled by dedicated SCV in base	
Category	3N	
Maximum lift capacity at hooks	11,023 lbs. (5,000 kg)	
Lift capacity through full lift range (OECD at the hooks)	9,700 lbs. (4,400 kg)	
<b>REAR PTO</b>		
Type	Electro-hydraulically engaged, oil cooled, multi-disc design	
Engine rpm at rated PTO speeds with 540/540E/1000 option	1,950 / 1,721 / 1,950	
Engine rpm at rated PTO speeds with 540E/1000/1000E option	1,618 / 2,012 / 1,659	
<b>FRONT PTO, OPTIONAL</b>		
Type	Electro-hydraulically engaged, oil cooled, 115 kW power	
Engine speed at rated PTO speed (1000), rpm	1,969	
<b>CAB</b>		
Specifications	ComfortView cab with 2 panorama doors or B-Post on left hand side and Generation 4 CommandCenter display	
Suspension (option)	Adaptive hydraulic cab suspension HCS Plus	
Noise level at operator's ear, dB(A)	71	
Cab glass area, m <sup>2</sup>	6.11	
Cab volume, m <sup>3</sup>	3.33	
Display	Generation 4 CommandCenter 4200 8.4" or 4600 10" display	

TRACTOR MODEL	6230R	6250R
<b>MISCELLANEOUS</b>		
AutoTrac Ready	Base	
ISOBUS implement connection	Base	
CommandCenter video inputs	1 input for 4100 7" display, 2 inputs for 4600 10" display optional	
Drive pedal mode	Base	
Trailer brake systems (options)	Hydraulic and/ or pneumatic system	
Pneumatic trailer brake system (option)	Electro-magnetic compressor clutch, hydraulic retarding valve, air drier included	
<b>CAPACITIES</b>		
Fuel tank (base/option)	410	
Engine coolant	8 gal (29 L)	
<b>DIMENSIONS AND WEIGHTS</b>		
Wheelbase	114 in. (2,900 mm)	
Width x Height x Length	8.4 x 10.7 x 17 ft. (2,550 x 3,250 x 5,190 mm)	
<i>Measured with flanged axle, up to cab roof, from front weight support to horizontal draft link hooks and with max. front tires / max. rear tire sizes.</i>		
Height from center of rear axle to top of cab (no beacon light)	7.5 ft. (2,273 mm)	
Turning radius	20.7 ft. (6.32 m)	
<i>According to ISO789-3 measured for 600/65R30 at 2,050 mm tread setting and 1.6 bar inflation pressure on level ground</i>		
Shipping weight	20,503 lbs. (9,300 kg)	
<i>Measured with average specifications</i>		
Maximum permissible gross weight	33,069 lbs. (15,000 kg)	
<b>TIRE SIZES</b>		
Front tire sizes, max. available (SRI)	600/70R30 (SRI 750)	
Rear tire sizes, max. available (SRI)	800/75R38 (SRI 975)	

You have a loyal sidekick.  
So should your operation.



**JOHN DEERE**  
FINANCIAL

As you face the demands of your day, it's good to have company you can count on. You can rely on us when you need financing for your operation. With John Deere Financial, you have a resource that gives you many options to choose from.

At the end of the day—and every day forward—we'll be there at your side.

U.S.A. [www.JohnDeereFinancial.com](http://www.JohnDeereFinancial.com)  
Canada [www.JohnDeereFinancial.ca](http://www.JohnDeereFinancial.ca)



This literature has been compiled for worldwide circulation. While general information, pictures and descriptions are provided, some illustrations and text may include finance, credit, insurance, product options and accessories NOT AVAILABLE in all regions. PLEASE CONTACT YOUR LOCAL DEALER FOR DETAILS. John Deere reserves the right to change specification and design of all products described in this literature without notice. John Deere's green and yellow color scheme, the leaping deer symbol, and JOHN DEERE are trademarks of Deere & Company.

